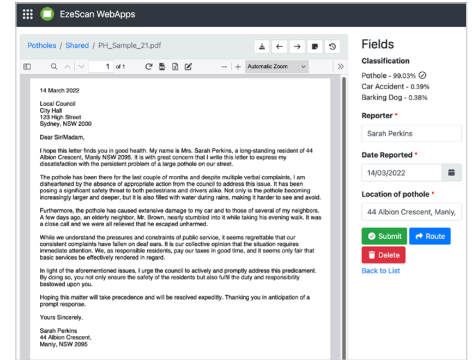




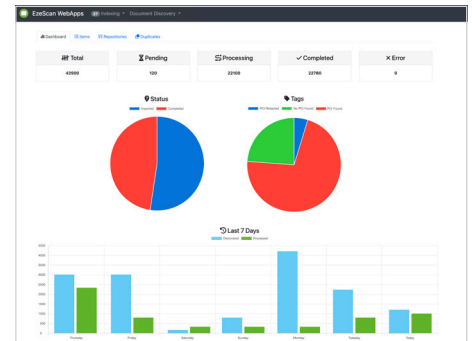
## Document Classification Assistant (DCA)

Users can extend the automated functionality of their workflows with EzeScan's DCA WebApp. This Machine learning, AI sidekick can be trained on an organisations documents to automatically identify, classify, categorise, prioritise and route documents to the corresponding RIA business workflows. DCA is typically deployed as an automated document sorting solution, designed to process documents and email from diverse input streams such as corporate and shared folders, network locations, production capture, MFDs, mobile devices and digital forms. This creates a centralised ingestion point that uses business rules to identify the purpose and value of incoming information, allowing it to be handled efficiently and consistently across the business.



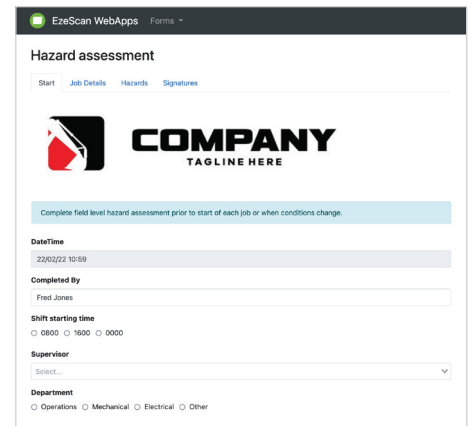
## Document Repository Analyser (DRA)

EzeScan's DRA WebApp can also be used in conjunction with RIA to crawl network file shares, email servers, and supported EDRMS platforms, automatically locating and cataloguing documents. It compiles a detailed inventory of files, capturing essential metadata such as repository name, file name, location, creation date, and processing status. Documents can then be sent to required RIA workflows for OCR, file conversion, document and content search, duplicate search, data extraction and PII/PCI compliance discovery and remediation.



## Digital Forms Assistant (DFA)

EzeScan's DFA WebApp is an ideal tool for any organisation to effortlessly transfer their labour-intensive paper-based or manual capture of business information to efficient digital online processes. With both internal and external facing forms, DFA can be seamlessly integrated into your existing web site to provide an effortless experience for your team and your customers. The web-based admin interface makes it easy to create and manage web forms by simply adding the required forms objects to the page. DFA captures the web form metadata as XML and can provide you a PDF record of the transaction. Any attachments included as part of the web form submission can be bundled with the form record and uploaded to any supported document management systems.



## Barcode Coversheet Generator (BCG)

BCG WebApp allows anyone in your organisation to generate a barcode coversheet with pre-populated metadata that enables them to scan a document from your MFD and into the desired location (network/ supported EDRMS). BCG is often used in back scanning projects to pre-define batches of documents, eliminating manual data entry.

